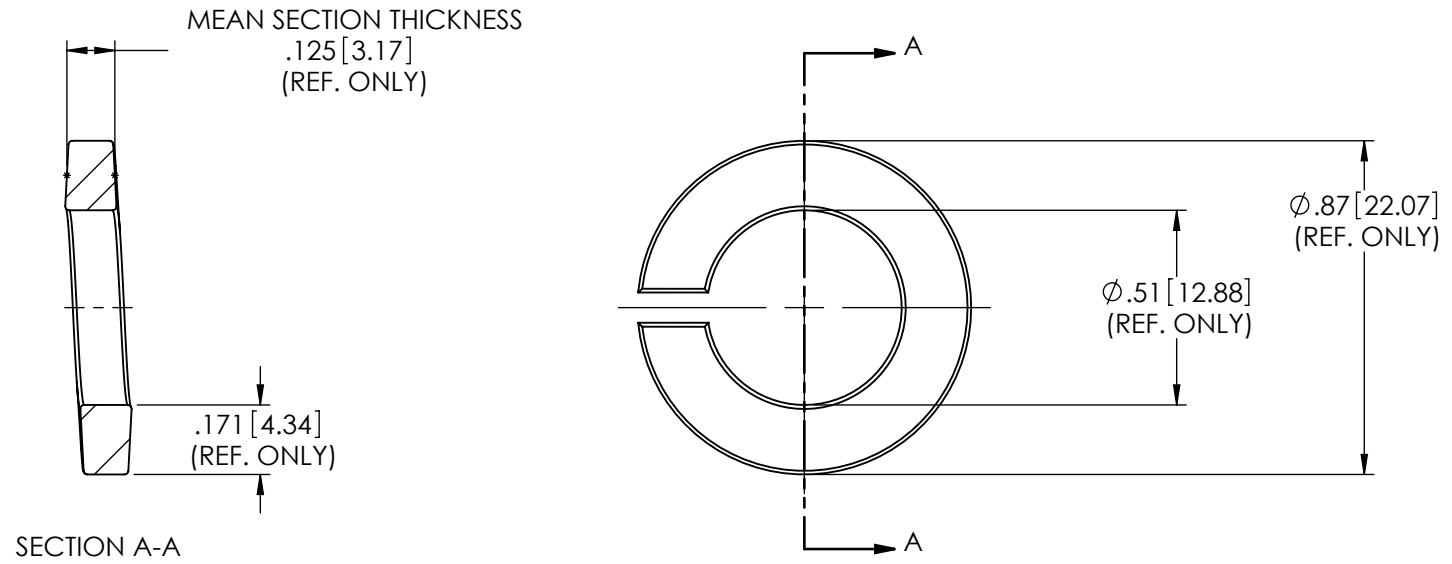
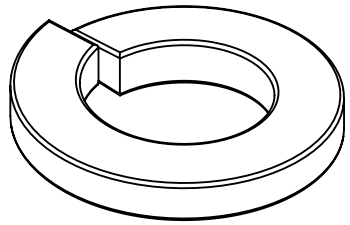


REVISIONS					
REV.	DATE	ECN #	DESCRIPTION	BY	APPROVED
1	1/18/2012		REDRAWN	CMH	



NOTES:
 1. UNLISTED DIMENSIONS AND TOLERANCES TO BE HELD IN ACCORDANCE TO ASME B18.21.1 1999.

PROPRIETARY AND CONFIDENTIAL
 THE INFORMATION CONTAINED IN THIS DRAWING IS THE SOLE PROPERTY OF H-J INTERNATIONAL, INC. ANY REPRODUCTION IN PART OR AS A WHOLE WITHOUT THE WRITTEN PERMISSION OF H-J ENTERPRISES, INC. IS PROHIBITED.

TOLERANCES (EXCEPT AS NOTED)
DECIMAL
+/-
FRACTIONAL
+/-
ANGULAR
+/-



H - J INTERNATIONAL, INC.
 3010 HIGH RIDGE BLVD. HIGH RIDGE, MO. 63049 USA
 PHONE 1-636-677-3421 FAX 1-636-376-1915

1/2" REGULAR HELICAL SPRING LOCK WASHER		
MATERIAL 18-8 STAINLESS STEEL 302, 303, 304 GRADE		
CHK'D	APP'D	DRAWING NO.
		WA0005-001
DRAWN BY CJT	DATE 4/22/2009	SCALE N.T.S.